



the **play inspection** company

Annual Inspection

Torpoint Town Council

Thanckes Park Play Park

Thanckes Park, Antony Road, Torpoint, Cornwall, PL11
2QX



API Associate



Unit 5, Glenmore Business Park, Blackhill Road, Poole, Dorset, BH16 6NL
t- 01202 590675 e- info@playinspections.co.uk

[www. playinspections .co.uk](http://www.playinspections.co.uk)

Inspection Scope for RPII Inspection Methodology

This document outlines the RPII scope for inspections undertaken by the Inspectors listed as Annual Inspectors on the RPII Register of Inspectors when undertaking Indoor Annual, Outdoor Annual, Outdoor Operational and Outdoor Routine inspections.

Inspections are undertaken with reference to the standards listed in this preamble only; where no date for the standard is given it will be the standard that is current at the time of inspection except where overlap periods are granted by the standards committee when standards are updated. The information contained in reports is provided to assist the owner/operator in fulfilling their responsibilities as detailed in the relevant standard. Other standards referenced within the listed standards do not form part of the inspection, unless they are also explicitly listed here.

The following standards are relevant to all installations of equipment that are publicly accessible to users; this includes public parks, pay and play parks, schools, nurseries, public houses, holiday parks, indoor play centres, farm parks etc. All equipment used or employed in publicly accessible areas should meet with the requirements of the relevant standards (listed below):

BS EN 1176 Parts 1, 2, 3, 4, 5, 6, 10 & 11 Playground equipment intended for permanent installation outdoors & indoors.

BS EN 1176 Part 7 - 'Guidance on Installation, Inspection, Maintenance and Operation' (this document gives guidance to the owners/operators of the facility on the installation, inspection, maintenance and operation of playground equipment, excluding ancillary items).

In the United Kingdom the National Foreword forms an important part to the understanding and implementation of the recommendations set out in this document. It clarifies the application of the document within the UK as best practice guidance, as the document has been used since its initial publication. Therefore, in the UK this standard (BS EN 1176 – Part 7) contains no requirements and needs to be read and implemented as guidance, with the use of the term 'shall' therefore becoming a recommendation, as in the term 'should'.

Domestic play equipment falls outside of the scope of BS EN 1176 and has its own standards (BS EN 71 series – Safety of Toys). Where domestic equipment can be identified this will be acknowledged in the report but any comments concerning compliance will follow the requirements and recommendations of BS EN 1176.

When water play items, including spray parks, are inspected any comments concerning compliance within the inspection will refer to BS EN 1176. We have not assessed these against the requirements of BS EN 17232 (Water play equipment and features).

Other equipment that is not clearly identified as unsupervised or domestic (natural play, self-build equipment etc.) will be assessed for compliance with the relevant standard listed below:

BS EN 15312 Free access multi-sports equipment
BS EN 14974 Skateparks
BS EN 16630 Permanently installed outdoor fitness equipment
BS EN 16899 Parkour equipment (plus RPII/API guidance notes)

Annual and Post Installation inspections will take into consideration compliance with these current standards, and defects related to wear and vandalism. Items not listed in the report have not been included in the inspection. The inspection will cover the playground equipment and the active area (that area which is obviously part of the playground), nominally up to three metres around, the fence line if closer, or other areas as agreed.

Operational inspections only take into consideration defects related to cleanliness, equipment ground clearances, ground surface finishes, exposed foundations, sharp edges, missing parts, excessive wear (of moving parts) structural integrity, wear and vandalism.

Routine visual inspections relate only to the most obvious defects such as broken or missing parts, litter, vandalism and issues created by severe weather conditions (the intention is to identify hazards created by storm damage).

All inspections are non-dismantling, non-destructive and do not include any structural, toxicology or impact assessments defined in the standard; however, the inspector will undertake a manual test for stability and if equipment fails under manual load, or any other hazard is identified as an unacceptable risk, the owner/operator will be notified as soon as practicably possible.

The inspector will access all reasonably accessible equipment and will assess all reasonably accessible parts above the standing surface. Where it is not possible to access parts of the equipment without employing an alternative means of access the report will record the action required by the owner/operator to ensure the continued safe use of the equipment.

Ancillary equipment will be assessed using the inspector's knowledge and experience of the standards named in this document. (Note: Ancillary items are not included in the specific equipment-type parts of the EN 1176 series; hence they are not assessed for compliance with EN 1176 series and are subject to a general safety assessment).

The owner/operator is responsible for the overall safety of the equipment and area.

The inspector will not undertake any of the following works unless specifically agreed in writing at the time of order:

Checking the depth and underlying structural integrity of any surface areas and/or carrying out any testing of the impact attenuating properties of any surfaces; the identification of any corrosion, rot or other deterioration in any apparatus or equipment other than by an external inspection; the inspection of any equipment (or part thereof) that is beneath the playing surface (loose-fill materials may be moved to expose foundations); tightening any bolts, hinges or other fixing devices on any apparatus or equipment; assessing or inspecting any electrical installations contained on any site and/or apparatus and/or equipment; assessing or inspecting any water supplies and/or water features and/or any associated computerised systems (including carrying out any programming); where planting or trees are mentioned in the report no assessments of toxicity, suitability or condition are undertaken – the owner/operator should have suitable inspections provided by a competent person.

The owner/operator should have a 'design risk assessment' provided by the manufacturer/designer of the area for the equipment and location in which the facility is installed.

The operator is responsible for managing risks of their provision and is required by law to carry out a 'suitable and sufficient assessment' of the risks associated with a site or activity. This inspection shall be considered as contributing to the operator's discharge of this responsibility.

The details contained within the report are a snapshot of the condition at the time of inspection only and subsequent events may affect the condition of the facility. Suggested remedial actions are based on the knowledge and experience of the inspector and/or that of the inspection company. The owner/operator should always seek the advice of the manufacturer or a competent person when undertaking repairs and/or modifications to equipment.

A full copy of the Play Inspection Company Ltd. Terms & Conditions is available on our website (www.playinspections.co.uk)

The operator is responsible for following the guidance of the relevant standards. The standards give guidance on the installation, inspection, maintenance and operation of the various types of facilities. The inspection guidance is listed in Table 1, with an indication of which parts will be included in an RPII Annual or Post-Installation Inspection. The relevant standards also contain additional parts which the operator should follow.

Inspection recommendations of relevant standards Refer to relevant standards for full text	Annual Main	RPII Annual/ Post Installation Inspection
6.1 d) Overall levels of safety of equipment (see note 1)	✓	✓ [1]
6.1 d) Overall levels of safety of foundations (see note 1)	✓	✓ [1]
6.1 d) Overall levels of safety of playing surfaces (see note 2)	✓	✓ [2]
6.1 d) Compliance with the relevant parts of the standard and or risk assessment (see note 3)	✓	✓ [3]
6.1 d) Effects of weather	✓	✓
6.1 d) Presence of rot, decay or corrosion (see note 1)	✓	✓ [1]
6.1 d) Assessment of repairs made or added or replaced components (see note 4)	✓	✓ [4]
6.1 d) Excavation or dismantling/additional measures	✓	✗
6.2.1 Assessment of glass reinforced plastics (see note 5)	✓	✓ [5]
6.2.1 Inspection of one post equipment (see note 1)	✓	✓ [1]
6.2.4 Undertaking the Operators inspection protocol	✓	✗

NB: The clause numbers in table 1 are taken from BS EN 1176 - Part 7:2020. The content is equally applicable to all other relevant standards listed herein. Playgrounds contain a range of equipment from different manufacturers and installed over a number of years; operators should implement any guidance provided by the manufacturer. Item specific detail is not readily available to RPII Playground Inspectors, whose report contributes to the operator's overall Annual Main Inspection as detailed in the relevant standards.

[1] A manual test only is undertaken for stability. Wear and instability are only detectable where readily apparent without dismantling or destruction and without the use of tools, excavation or specialist equipment. Rot and corrosion are tested or with a hammer and/or steel rod. Decay in timber may exist which can only be found with specialist equipment.

[2] Only the visible condition and dimensional compliance of surface extent is considered. Neither testing of impact attenuating properties nor measurement of the thickness of bound surfaces are undertaken on RPII annual inspections.

[3] The inspection assesses compliance where this can be tested on site using manual methods without dismantling, destruction and without the use of tools or specialist equipment.

[4] The operator should use manufacturer's recommended parts, or equivalent. We are unable to verify if such parts have been used, and any subsequent change in quality or performance.

[5] Visible glass fibres will be noted in reports. The operator is responsible for repairs or replacement.

Risk Assessment Matrix

			Scores in the report are multiplication factors of Likelihood x Severity					
			Severity>>					
Likelihood	Very High probability, if the situation is not addressed an accident is almost certain.	5	Very High	VL (5)	L (10)	M (15)	H (20)	VH (25)
	High probability an accident is probable without any added factor.	4	High	VL (4)	L (8)	M (12)	H (16)	H (20)
	Moderate probability an incident is foreseeable.	3	Moderate	VL (3)	L (6)	L (9)	M (12)	M (15)
	Some probability, requires a combination of factors to take place.	2	Low	VL (2)	VL (4)	L (6)	L (8)	L (10)
	No significant probability; lightning strike, freak accident.	1	Very Low	VL (1)	VL (2)	VL (3)	VL (4)	VL (5)
			Very Low	Low	Moderate	High	Very High	
			1	2	3	4	5	
			No injury likely e.g. damaged or soiled clothing, minor bruising, grazes	Minor injury, laceration or bruising requiring first aid only	Injury requiring medical intervention e.g. cuts requiring stitches	Serious injury including concussions or fracture of long bones	Severe injury involving a potential life changing injury or fatality	
			Severity>>					
			<p>Note 1: The total risk scores included within our reports are a multiplication factor of the calculated Likelihood and Severity of each finding. Both Likelihood and Severity are given a number between 1 - 5 as shown on the matrix above and these two numbers are then multiplied together to give the total risk score that is shown against defects on the report. Total risk scores can be divided in both directions, i.e. a total risk score of 12 could be a Likelihood (3) x Severity (4) or Likelihood (4) x Severity (3).</p> <p>Note 2: When we inspect we only see a snapshot of the current condition of the equipment. It is the operators responsibility to ensure that there is a continuing level of maintenance to keep the equipment in good working order and the site fit for use.</p>					

Equipment has been assessed to the following standards where relevant:

- BS EN 1176 Parts 1-11 (Playground equipment and surfacing)
- BS EN 14974 (Facilities for users of roller sports equipment)
- BS EN 15312 (Free access multi-sports equipment)
- BS EN 16899 (Parkour Equipment)
- BS EN 16630 (Outdoor Fitness Equipment).



Thanckes Park Play Park

Inspection Ref: 1610374

Site Ref: 67134

Inspected: 23-March-2022 - 09:08 by Kyle Warrington RPII Annual Inspector

Risk Assessment: 12 Moderate Risk



Location:

The site is located in an area of public open space and is not directly overlooked by any properties in the local community.

Disabled Access:

Some accessible features; an area that presents difficulties to the majority of people with disabilities but in favourable circumstances and certainly in partnership can be accessed.

i 8 - Low Risk

Item: Gate - Self Closing
Manufacturer: Mono Gate Ltd
Surface Type: Concrete
Item Quantity: 1
Equipment Compliance: N/A
Surface Area Compliance: N/A



Total Findings: 3

Finding 1

There is or are fixings missing on the item - Replace all missing fixings

Finding 2

The gate is not operating correctly - Take effective action to ensure the gate closes between 4 and 8 seconds

Finding 3

The entrance is becoming uneven - Monitor for any further deterioration or creation of trip points and repair as required

i 4 - Very Low Risk

Item: Litter Bin
Manufacturer: Glasdon
Surface Type: Grass
Item Quantity: 1
Equipment Compliance: N/A
Surface Area Compliance: N/A



Total Findings: 1

Finding 1

This item is satisfactory - no work required -

i 8 - Low Risk

Item: Planting Area
Manufacturer: Not Identified
Surface Type: Grass
Item Quantity: 1
Equipment Compliance: N/A
Surface Area Compliance: N/A

Total Findings: 2



Finding 1
 Some of the planters are not secured and may be subjected to misuse - Monitor use and consider securing the items

Finding 2
 The tyre planter may encourage access onto the top of the wall where there are falls of up to 1.8m to the surface outside of the play area. - Consider relocating the tyre to discourage access onto the wall

i 8 - Low Risk

Item: Fence - Timber & Mesh Infill
Manufacturer: Not Identified
Surface Type: Forest Floor
Item Quantity: 1
Equipment Compliance: N/A
Surface Area Compliance: N/A

Total Findings: 5



Finding 1
 There is some evidence of rot in the timber - Monitor for any further deterioration and replace as required

Finding 2
 There is some damage to the fence sections - Monitor for any further deterioration and repair as required

Finding 3
 There are projecting bolt thread(s) present - Remove excess thread length and deburr or provide cap

Finding 4
 There is some evidence of rot in the timber posts - Monitor for any further deterioration and replace as required

Finding 5
 There are a number of loose posts around the fence - Monitor for any further deterioration and reset as required

i 10 - Low Risk

Item: Gate - Maintenance
Manufacturer: Not Identified
Surface Type: Grass
Item Quantity: 1
Equipment Compliance: N/A
Surface Area Compliance: N/A



Total Findings: 2

Finding 1

The gate post has rotted and sheared and is unstable, the additional support posts installed are inadequate to support the structure. - Replace all affected timbers

Finding 2

The item has been damaged - Monitor for any further deterioration and replace as required

i 6 - Low Risk

Item: Stone Wall
Manufacturer: Not Identified
Surface Type: Grass
Item Quantity: 1
Equipment Compliance: N/A
Surface Area Compliance: N/A



Total Findings: 1

Finding 1

There is minor damage to the wall - Monitor for any further deterioration and repair as required

i 6 - Low Risk

Item: Bench
Manufacturer: Not Identified
Surface Type: Concrete
Item Quantity: 2
Equipment Compliance: N/A
Surface Area Compliance: N/A



Total Findings: 1

Finding 1

The item has been damaged - Monitor for any further deterioration and replace as required

i 4 - Very Low Risk

Item: Sign
Manufacturer: Owner/Operator
Surface Type: Grass
Item Quantity: 1
Equipment Compliance: N/A
Surface Area Compliance: N/A



Total Findings: 1

Finding 1

This item is satisfactory - no work required -

i 10 - Low Risk

Item: Site General
Manufacturer: Owner/Operator
Surface Type: N/A
Item Quantity: 1
Equipment Compliance: N/A
Surface Area Compliance: N/A

Total Findings: 5



Finding 1

Some of the mats throughout the site have separated, are loose and can be lifted creating trip points - Reinststate surfaces as required

Finding 2

The safety surfaces around the site have been damaged/are wearing - Monitor for any further deterioration and repair as required

Finding 3

There is an accessible tree stump present within the play area that may be climbed and has falls in excess of 600mm (approximately 1.0m) onto the remains of a stone wall beneath. - Remove the remaining stump or reduce the height to reduce any potential falls to less than 600mm.

Finding 4

A significant section of a tree present on site has fallen. The remaining tree trunk is still upright but may be unstable or in poor health. - Ensure that the tree is inspected by a competent person to ensure ongoing structural integrity. We would recommend that the other trees present on site are also inspected. Remove the fallen section of tree.

Finding 5

There is weed / vegetation growth on, between, or around the edges of the surfacing - Remove weed / vegetation growth

i 8 - Low Risk

Item: Picnic Table
Manufacturer: Not Identified
Surface Type: Grass
Item Quantity: 2
Equipment Compliance: N/A
Surface Area Compliance: N/A

Total Findings: 1



Finding 1

The table is not secured to the ground and there is some potential for the item to be moved within falling spaces of equipment - Secure the item to the ground

! 12 - Moderate Risk

Item: 2 Bay 2 Flat 2 Cradle
Manufacturer: Wicksteed Playgrounds
Surface Type: Matta
Item Quantity: 1
Equipment Compliance: No
Surface Area Compliance: No
Life Expectancy: 5 -10 Years
Total Findings: 8



Finding 1

The paint is flaking off the metalwork - Rub down and re-paint

Finding 3

The bushes are showing signs of wear - Monitor for any further deterioration and replace as required

Finding 5

The chain links are worn in excess of 40% and require renewing - Replace worn chains

Finding 7

The surfacing dimensions are short and do not meet with the requirements of the current applicable standard - Monitor - no remedial action recommended

Finding 2

The seat has minor damage or wear - Monitor for any further deterioration and replace as required

Finding 4

The connecting links are in excess of 8.6mm and less than 12mm and fail the requirements of BS EN 1176 Part 1; clause 4.2.13, Chains - Monitor - No remedial work recommended

Finding 6

The fixings or components for this item were in excess of 2.5m above the standing surface and could not be fully accessed by the inspector. We have completed a visual inspection of the fixings from ground level but a maintenance inspection should be undertaken to assess the condition, security and wear of the components at intervals in accordance with the manufacturers recommendations. - Inspect in accordance with the manufacturers recommendations

Finding 8

The seat is severely damaged and requires replacing - Replace damaged seat



i 9 - Low Risk

Item: Supernova
Manufacturer: Kompan Ltd
Surface Type: Matta
Item Quantity: 1
Equipment Compliance: Yes
Surface Area Compliance: Yes
Life Expectancy: 3 - 5 Years
Total Findings: 4



Finding 1

The surfacing is very loose beneath this unit creating trip points - Repair as required to secure

Finding 3

There is/are bolt cap covers missing or damaged on the item - Replace missing or damaged bolt cap covers

Finding 2

The casing is cracked in a number of places and rough edges are exposed in two areas - Repair as required

Finding 4

The fixings have corroded excessively - Replace all corroded fixings

i 9 - Low Risk

Item: Multi Play (Junior)
Manufacturer: Kompan Ltd
Surface Type: Matta
Item Quantity: 1
Equipment Compliance: No
Surface Area Compliance: Yes
Life Expectancy: 3 - 5 Years
Total Findings: 11



Finding 1

There are significant gaps (over 30mm) between the surface and the edging or between the joints in the surface; these are large enough for a small foot to enter - Repair surfacing

Finding 2

There are post / end caps missing from the item - Replace missing post caps

Finding 3

There is/are finger entrapment/s in the frame due to missing inserts or fixings and the item fails to meet the requirements of BS EN 1176 Part 1 4.2.7.6 Entrapment of fingers - Replace the missing inserts or fixings to remove the entrapment

Finding 4

The multiple has missing component(s) on the structure - Consider replacing missing components

Finding 5

There is/are finger entrapment/s in the frame due to missing fixings and inserts and the item fails to meet the requirements of BS EN 1176 Part 1 4.2.7.6 Entrapment of fingers - Replace the missing inserts or fixings to remove the entrapment

Finding 6

There is/are bolt cap covers missing or damaged on the item - Replace missing or damaged bolt cap covers

Finding 7

The rubber covering has been damaged exposing rusty steel - Repair or replace

Finding 8

There is/are finger entrapment/s in the frame and the item fails to meet the requirements of BS EN 1176 Part 1 4.2.7.6 Entrapment of fingers - Monitor - No remedial work recommended

Finding 9

The rubber bearing cover has been damaged - Monitor for any further deterioration and replace as required

Finding 10

There is some notable evidence of chain wear - Monitor for any further deterioration and replace when 40% worn

Finding 11

Part of the rubber ring covering has been damaged - Monitor for any further deterioration and replace as required



i 6 - Low Risk

Item: Activity Trail
Manufacturer: Wicksteed Playgrounds
Surface Type: Grass
Item Quantity: 1
Equipment Compliance: No
Surface Area Compliance: Yes
Life Expectancy: 5 -10 Years
Total Findings: 2



Finding 1

The timber has a number of splits/shakes or air cracks and this may affect the stability or allow water ingress which will accelerate the rotting process - Monitor to ensure the splits do not cross through fixing points of the structure and/or cause any instability

Finding 2

The connecting links are in excess of 8.6mm and less than 12mm and fail the requirements of BS EN 1176 Part 1; clause 4.2.13, Chains - Monitor - No remedial work recommended

i 8 - Low Risk

Item: Climbing Frame
Manufacturer: Wicksteed Playgrounds
Surface Type: Matta
Item Quantity: 1
Equipment Compliance: No
Surface Area Compliance: Yes
Life Expectancy: 3 - 5 Years
Total Findings: 10



Finding 1

There are a number of dents in the slide surface - Monitor for any further deterioration and repair as required

Finding 2

The slide is predominately south facing and will catch the majority of the sun's heat during the day. Slide surfaces can become very warm during periods of sustained sunny weather - Monitor - No remedial work recommended

Finding 3

There are falls in excess of 600mm between adjacent components on the structure, in contravention of the recommendations set out in BS EN 1176 Part 1; 4.2.8.4 - Monitor - No remedial work recommended

Finding 4

There is or are fixings missing on the item - Replace all missing fixings

Finding 5

The fixings have corroded excessively - Replace all corroded fixings

Finding 6

The item fails to meet the requirements of BS EN 1176 Part 1 4.2.7.2 for head and neck entrapment in the frame - Monitor - No remedial work recommended

Finding 7

There is/are finger entrapment/s in the frame and the item fails to meet the requirements of BS EN 1176 Part 1 4.2.7.6 Entrapment of fingers - Monitor - No remedial work recommended

Finding 8

The paintwork on this item has been damaged or worn exposing the metal underneath which is rusting - Treat any rusting components and repaint

Finding 9

The surface is lifting at the edges and creating trip points - Repair perimeter of surfacing to remove trip points

Finding 10

There is/are finger entrapment/s in the frame due to missing inserts and the item fails to meet the requirements of BS EN 1176 Part 1 4.2.7.6 Entrapment of fingers - Replace the missing inserts to remove the entrapment

i 6 - Low Risk

Item: Log Climber
Manufacturer: Wicksteed Playgrounds
Surface Type: Grass
Item Quantity: 1
Equipment Compliance: No
Surface Area Compliance: Yes
Life Expectancy: 5 -10 Years
Total Findings: 2



Finding 1

The connecting links are in excess of 8.6mm and less than 12mm and fail the requirements of BS EN 1176 Part 1; clause 4.2.13, Chains - Monitor - No remedial work recommended

Finding 2

The timber has a number of splits/shakes or air cracks and this may affect the stability or allow water ingress which will accelerate the rotting process - Monitor to ensure the splits do not cross through fixing points of the structure and/or cause any instability

i 4 - Very Low Risk

Item: Play Panel
Manufacturer: Not Identified
Surface Type: Grass
Item Quantity: 1
Equipment Compliance: Yes
Surface Area Compliance: N/A
Life Expectancy: 5 -10 Years
Total Findings: 1



Finding 1

This item is satisfactory - no work required -

i 4 - Very Low Risk

Item: Play Panel
Manufacturer: Not Identified
Surface Type: Grass
Item Quantity: 1
Equipment Compliance: Yes
Surface Area Compliance: N/A
Life Expectancy: 5 -10 Years
Total Findings: 1



Finding 1

This item is satisfactory - no work required -

i 4 - Very Low Risk

Item: Musical Instrument
Manufacturer: Hags
Surface Type: Grass
Item Quantity: 1
Equipment Compliance: Yes
Surface Area Compliance: N/A
Life Expectancy: 5 -10 Years
Total Findings: 1



Finding 1

This item is satisfactory - no work required -

i 10 - Low Risk

Item: Spring Donkey
Manufacturer: Wicksteed Playgrounds
Surface Type: Matta
Item Quantity: 1
Equipment Compliance: Yes
Surface Area Compliance: Yes
Life Expectancy: <12 Months
Total Findings: 1



Finding 1

The spring donkey has been removed but the steel base is still present - Replace the spring donkey or remove the foundation plates

i 8 - Low Risk

Item: See Saw
Manufacturer: Wicksteed Playgrounds
Surface Type: Matta
Item Quantity: 1
Equipment Compliance: Yes
Surface Area Compliance: Yes
Life Expectancy: 5 -10 Years
Total Findings: 1



Finding 1

There is moderate damage to the surface - Repair the damaged areas of surfacing

Findings information

8 - Low Risk (Finding 1)

Item: Gates - Gate - Self Closing
Manufacturer: Mono Gate Ltd

Risk Level: L - Low Risk
Surface: Concrete



Finding: There is or are fixings missing on the item

Action: Replace all missing fixings

5 - Very Low Risk (Finding 2)

Item: Gates - Gate - Self Closing
Manufacturer: Mono Gate Ltd

Risk Level: V - Very Low Risk
Surface: Concrete



Finding: The gate is not operating correctly

Action: Take effective action to ensure the gate closes between 4 and 8 seconds

i 6 - Low Risk (Finding 3)

Item: Gates - Gate - Self Closing
Manufacturer: Mono Gate Ltd

Risk Level: L - Low Risk
Surface: Concrete



Finding: The entrance is becoming uneven

Action: Monitor for any further deterioration or creation of trip points and repair as required

i 8 - Low Risk (Finding 1)

Item: Other - Planting Area
Manufacturer: Not Identified

Risk Level: L - Low Risk
Surface: Grass



Finding: Some of the planters are not secured and may be subjected to misuse

Action: Monitor use and consider securing the items

i 8 - Low Risk (Finding 2)

Item: Other - Planting Area
Manufacturer: Not Identified

Risk Level: L - Low Risk
Surface: Grass



Finding: The tyre planter may encourage access onto the top of the wall where there are falls of up to 1.8m to the surface outside of the play area.

Action: Consider relocating the tyre to discourage access onto the wall

i 6 - Low Risk (Finding 1)

Item: Fences - Fence - Timber & Mesh Infill
Manufacturer: Not Identified

Risk Level: L - Low Risk
Surface: Forest Floor



Finding: There is some evidence of rot in the timber

Action: Monitor for any further deterioration and replace as required

i 6 - Low Risk (Finding 2)

Item: Fences - Fence - Timber & Mesh Infill
Manufacturer: Not Identified

Risk Level: L - Low Risk
Surface: Forest Floor



Finding: There is some damage to the fence sections

Action: Monitor for any further deterioration and repair as required

i 8 - Low Risk (Finding 3)

Item: Fences - Fence - Timber & Mesh Infill
Manufacturer: Not Identified
Risk Level: L - Low Risk
Surface: Forest Floor



Finding: There are projecting bolt thread(s) present
Action: Remove excess thread length and deburr or provide cap

i 6 - Low Risk (Finding 4)

Item: Fences - Fence - Timber & Mesh Infill
Manufacturer: Not Identified
Risk Level: L - Low Risk
Surface: Forest Floor



Finding: There is some evidence of rot in the timber posts
Action: Monitor for any further deterioration and replace as required

i 6 - Low Risk (Finding 5)

Item: Fences - Fence - Timber & Mesh Infill
Manufacturer: Not Identified

Risk Level: L - Low Risk
Surface: Forest Floor



Finding: There are a number of loose posts around the fence

Action: Monitor for any further deterioration and reset as required

i 10 - Low Risk (Finding 1)

Item: Gates - Gate - Maintenance
Manufacturer: Not Identified

Risk Level: L - Low Risk
Surface: Grass




Finding: The gate post has rotted and sheared and is unstable, the additional support posts installed are inadequate to support the structure.

Action: Replace all affected timbers

i 6 - Low Risk (Finding 2)

Item:	Gates - Gate - Maintenance	Risk Level:	L - Low Risk
Manufacturer:	Not Identified	Surface:	Grass

Finding: The item has been damaged

Action: Monitor for any further deterioration and replace as required

i 6 - Low Risk (Finding 1)

Item:	Ancillary Items - Stone Wall	Risk Level:	L - Low Risk
Manufacturer:	Not Identified	Surface:	Grass




Finding: There is minor damage to the wall

Action: Monitor for any further deterioration and repair as required

i 6 - Low Risk (Finding 1)

Item: Ancillary Items - Bench
Manufacturer: Not Identified

Risk Level: L - Low Risk
Surface: Concrete



Finding: The item has been damaged

Action: Monitor for any further deterioration and replace as required

i 9 - Low Risk (Finding 1)

Item: Ancillary Items - Site General
Manufacturer: Owner/Operator

Risk Level: L - Low Risk
Surface: N/A



Finding: Some of the mats throughout the site have separated, are loose and can be lifted creating trip points

Action: Reinstate surfaces as required

i 4 - Very Low Risk (Finding 2)

Item: Ancillary Items - Site General
Manufacturer: Owner/Operator

Risk Level: V - Very Low Risk
Surface: N/A



Finding: The safety surfaces around the site have been damaged/are wearing

Action: Monitor for any further deterioration and repair as required

i 10 - Low Risk (Finding 3)

Item: Ancillary Items - Site General
Manufacturer: Owner/Operator

Risk Level: L - Low Risk
Surface: N/A



Finding: There is an accessible tree stump present within the play area that may be climbed and has falls in excess of 600mm (approximately 1.0m) onto the remains of a stone wall beneath.

Action: Remove the remaining stump or reduce the height to reduce any potential falls to less than 600mm.

i 10 - Low Risk (Finding 4)

Item: Ancillary Items - Site General
Manufacturer: Owner/Operator

Risk Level: L - Low Risk
Surface: N/A



Finding: A significant section of a tree present on site has fallen. The remaining tree trunk is still upright but may be unstable or in poor health.

Action: Ensure that the tree is inspected by a competent person to ensure ongoing structural integrity. We would recommend that the other trees present on site are also inspected. Remove the fallen section of tree.

i 6 - Low Risk (Finding 5)

Item: Ancillary Items - Site General
Manufacturer: Owner/Operator

Risk Level: L - Low Risk
Surface: N/A



Finding: There is weed / vegetation growth on, between, or around the edges of the surfacing

Action: Remove weed / vegetation growth

i 8 - Low Risk (Finding 1)

Item: Ancillary Items - Picnic Table
Manufacturer: Not Identified

Risk Level: L - Low Risk
Surface: Grass



Finding: The table is not secured to the ground and there is some potential for the item to be moved within falling spaces of equipment
Action: Secure the item to the ground

i 6 - Low Risk (Finding 1)

Item: Swings - 2 Bay 2 Flat 2 Cradle
Manufacturer: Wicksteed Playgrounds

Risk Level: L - Low Risk
Surface: Matta



Finding: The paint is flaking off the metalwork
Action: Rub down and re-paint

i 6 - Low Risk (Finding 2)

Item: Swings - 2 Bay 2 Flat 2 Cradle
Manufacturer: Wicksteed Playgrounds

Risk Level: L - Low Risk
Surface: Matta



Finding: The seat has minor damage or wear

Action: Monitor for any further deterioration and replace as required

i 4 - Very Low Risk (Finding 3)

Item: Swings - 2 Bay 2 Flat 2 Cradle
Manufacturer: Wicksteed Playgrounds

Risk Level: V - Very Low Risk
Surface: Matta



Finding: The bushes are showing signs of wear

Action: Monitor for any further deterioration and replace as required

i 5 - Very Low Risk (Finding 4)

Item: Swings - 2 Bay 2 Flat 2 Cradle
Manufacturer: Wicksteed Playgrounds

Risk Level: V - Very Low Risk
Surface: Matta



Finding: The connecting links are in excess of 8.6mm and less than 12mm and fail the requirements of BS EN 1176 Part 1; clause 4.2.13, Chains

Action: Monitor - No remedial work recommended

i 8 - Low Risk (Finding 5)

Item: Swings - 2 Bay 2 Flat 2 Cradle
Manufacturer: Wicksteed Playgrounds

Risk Level: L - Low Risk
Surface: Matta



Finding: The chain links are worn in excess of 40% and require renewing

Action: Replace worn chains

i 0 - Risk Assessment not Undertaken (Finding 6)

Item: Swings - 2 Bay 2 Flat 2 Cradle
Manufacturer: Wicksteed Playgrounds

Risk Level: N - Risk Assessment not Undertaken
Surface: Matta



Finding: The fixings or components for this item were in excess of 2.5m above the standing surface and could not be fully accessed by the inspector. We have completed a visual inspection of the fixings from ground level but a maintenance inspection should be undertaken to assess the condition, security and wear of the components at intervals in accordance with the manufacturers recommendations.

Action: Inspect in accordance with the manufacturers recommendations

i 5 - Very Low Risk (Finding 7)

Item: Swings - 2 Bay 2 Flat 2 Cradle
Manufacturer: Wicksteed Playgrounds

Risk Level: V - Very Low Risk
Surface: Matta



Finding: The surfacing dimensions are short and do not meet with the requirements of the current applicable standard

Action: Monitor - no remedial action recommended

 12 - Moderate Risk (Finding 8)

Item: Swings - 2 Bay 2 Flat 2 Cradle
Manufacturer: Wicksteed Playgrounds

Risk Level: M - Moderate Risk
Surface: Matta



Finding: The seat is severely damaged and requires replacing

Action: Replace damaged seat

i 9 - Low Risk (Finding 1)

Item: Rotor Play - Supernova
Manufacturer: Kompan Ltd

Risk Level: L - Low Risk
Surface: Matta



Finding: The surfacing is very loose beneath this unit creating trip points

Action: Repair as required to secure

i 9 - Low Risk (Finding 2)

Item: Rotor Play - Supernova
Manufacturer: Kompan Ltd

Risk Level: L - Low Risk
Surface: Matta



Finding: The casing is cracked in a number of places and rough edges are exposed in two areas

Action: Repair as required

i 4 - Very Low Risk (Finding 3)

Item: Rotor Play - Supernova
Manufacturer: Kompan Ltd

Risk Level: V - Very Low Risk
Surface: Matta



Finding: There is/are bolt cap covers missing or damaged on the item

Action: Replace missing or damaged bolt cap covers

i 8 - Low Risk (Finding 4)

Item: Rotor Play - Supernova
Manufacturer: Kompan Ltd

Risk Level: L - Low Risk
Surface: Matta



Finding: The fixings have corroded excessively

Action: Replace all corroded fixings

i 9 - Low Risk (Finding 1)

Item: Activity Equipment - Multi Play (Junior)
Manufacturer: Kompan Ltd

Risk Level: L - Low Risk
Surface: Matta



Finding: There are significant gaps (over 30mm) between the surface and the edging or between the joints in the surface; these are large enough for a small foot to enter

Action: Repair surfacing

i 6 - Low Risk (Finding 2)

Item: Activity Equipment - Multi Play (Junior)
Manufacturer: Kompan Ltd

Risk Level: L - Low Risk
Surface: Matta



Finding: There are post / end caps missing from the item

Action: Replace missing post caps

i 5 - Very Low Risk (Finding 3)

Item: Activity Equipment - Multi Play (Junior)
Manufacturer: Kompan Ltd

Risk Level: V - Very Low Risk
Surface: Matta



Finding: There is/are finger entrapment/s in the frame due to missing inserts or fixings and the item fails to meet the requirements of BS EN 1176 Part 1 4.2.7.6 Entrapment of fingers

Action: Replace the missing inserts or fixings to remove the entrapment

i 6 - Low Risk (Finding 4)

Item: Activity Equipment - Multi Play (Junior)
Manufacturer: Kompan Ltd

Risk Level: L - Low Risk
Surface: Matta



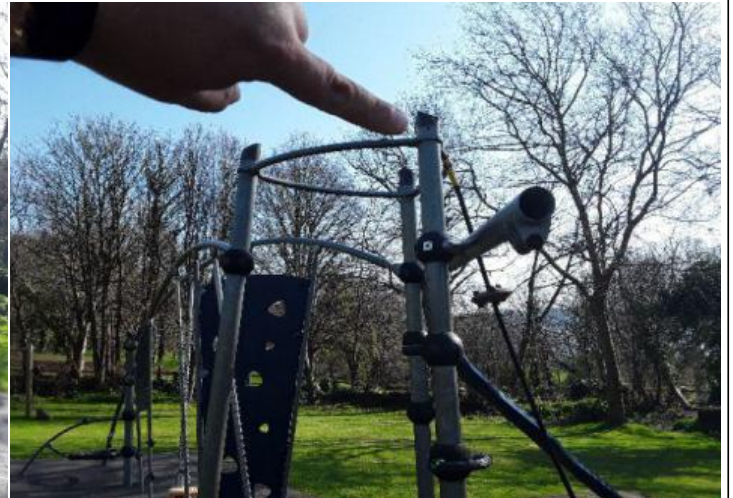
Finding: The multiple has missing component(s) on the structure

Action: Consider replacing missing components

i 5 - Very Low Risk (Finding 5)

Item: Activity Equipment - Multi Play (Junior)
Manufacturer: Kompan Ltd

Risk Level: V - Very Low Risk
Surface: Matta



Finding: There is/are finger entrapment/s in the frame due to missing fixings and inserts and the item fails to meet the requirements of BS EN 1176 Part 1 4.2.7.6 Entrapment of fingers

Action: Replace the missing inserts or fixings to remove the entrapment

i 4 - Very Low Risk (Finding 6)

Item: Activity Equipment - Multi Play (Junior)
Manufacturer: Kompan Ltd

Risk Level: V - Very Low Risk
Surface: Matta



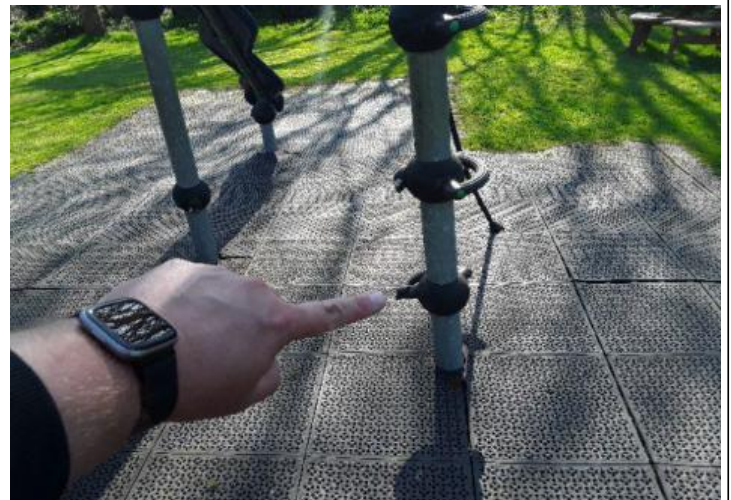
Finding: There is/are bolt cap covers missing or damaged on the item

Action: Replace missing or damaged bolt cap covers

i 8 - Low Risk (Finding 7)

Item: Activity Equipment - Multi Play (Junior)
Manufacturer: Kompan Ltd

Risk Level: L - Low Risk
Surface: Matta



Finding: The rubber covering has been damaged exposing rusty steel

Action: Repair or replace

i 5 - Very Low Risk (Finding 8)

Item: Activity Equipment - Multi Play (Junior)
Manufacturer: Kompan Ltd

Risk Level: V - Very Low Risk
Surface: Matta



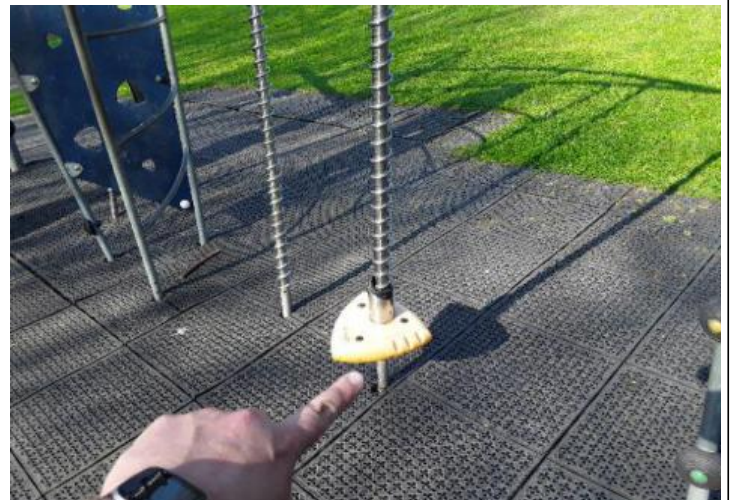
Finding: There is/are finger entrapment/s in the frame and the item fails to meet the requirements of BS EN 1176 Part 1 4.2.7.6 Entrapment of fingers

Action: Monitor - No remedial work recommended

i 6 - Low Risk (Finding 9)

Item: Activity Equipment - Multi Play (Junior)
Manufacturer: Kompan Ltd

Risk Level: L - Low Risk
Surface: Matta



Finding: The rubber bearing cover has been damaged

Action: Monitor for any further deterioration and replace as required

i 6 - Low Risk (Finding 10)

Item: Activity Equipment - Multi Play (Junior)
Manufacturer: Kompan Ltd

Risk Level: L - Low Risk
Surface: Matta



Finding: There is some notable evidence of chain wear

Action: Monitor for any further deterioration and replace when 40% worn

i 6 - Low Risk (Finding 11)

Item: Activity Equipment - Multi Play (Junior)
Manufacturer: Kompan Ltd

Risk Level: L - Low Risk
Surface: Matta



Finding: Part of the rubber ring covering has been damaged **Action:** Monitor for any further deterioration and replace as required

i 6 - Low Risk (Finding 1)

Item: Activity Equipment - Activity Trail
Manufacturer: Wicksteed Playgrounds

Risk Level: L - Low Risk
Surface: Grass



Finding: The timber has a number of splits/shakes or air cracks and this may affect the stability or allow water ingress which will accelerate the rotting process
Action: Monitor to ensure the splits do not cross through fixing points of the structure and/or cause any instability

i 5 - Very Low Risk (Finding 2)

Item: Activity Equipment - Activity Trail
Manufacturer: Wicksteed Playgrounds

Risk Level: V - Very Low Risk
Surface: Grass

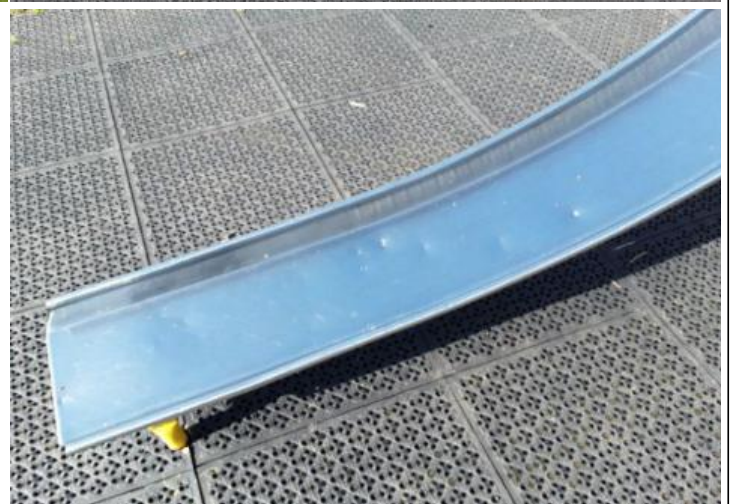


Finding: The connecting links are in excess of 8.6mm and less than 12mm and fail the requirements of BS EN 1176 Part 1; clause 4.2.13, Chains
Action: Monitor - No remedial work recommended

i 4 - Very Low Risk (Finding 1)

Item: Activity Equipment - Climbing Frame
Manufacturer: Wicksteed Playgrounds

Risk Level: V - Very Low Risk
Surface: Matta



Finding: There are a number of dents in the slide surface

Action: Monitor for any further deterioration and repair as required

6 - Low Risk (Finding 2)

Item: Activity Equipment - Climbing Frame
Manufacturer: Wicksteed Playgrounds

Risk Level: L - Low Risk
Surface: Matta



Finding: The slide is predominately south facing and will catch the majority of the sun's heat during the day. Slide surfaces can become very warm during periods of sustained sunny weather

Action: Monitor - No remedial work recommended

8 - Low Risk (Finding 3)

Item: Activity Equipment - Climbing Frame
Manufacturer: Wicksteed Playgrounds

Risk Level: L - Low Risk
Surface: Matta



Finding: There are falls in excess of 600mm between adjacent components on the structure, in contravention of the recommendations set out in BS EN 1176 Part 1; 4.2.8.4

Action: Monitor - No remedial work recommended

i 8 - Low Risk (Finding 4)

Item: Activity Equipment - Climbing Frame
Manufacturer: Wicksteed Playgrounds

Risk Level: L - Low Risk
Surface: Matta



Finding: There is or are fixings missing on the item

Action: Replace all missing fixings

i 8 - Low Risk (Finding 5)

Item: Activity Equipment - Climbing Frame
Manufacturer: Wicksteed Playgrounds

Risk Level: L - Low Risk
Surface: Matta



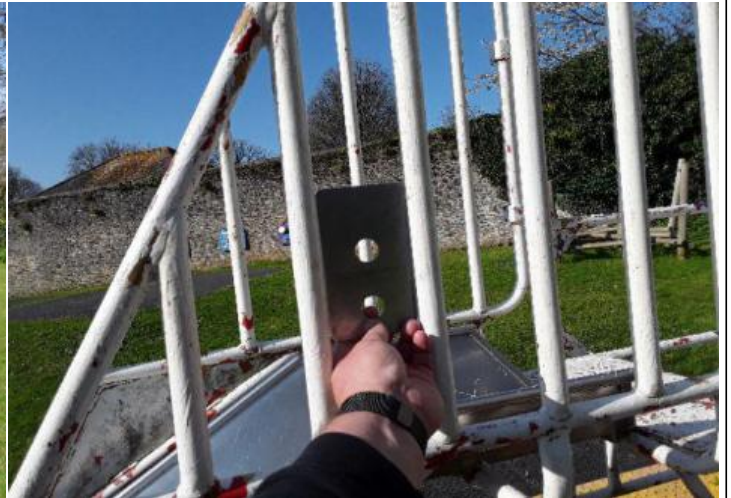
Finding: The fixings have corroded excessively

Action: Replace all corroded fixings

i 5 - Very Low Risk (Finding 6)

Item: Activity Equipment - Climbing Frame
Manufacturer: Wicksteed Playgrounds

Risk Level: V - Very Low Risk
Surface: Matta



Finding: The item fails to meet the requirements of BS EN 1176 Part 1 4.2.7.2 for head and neck entrapment in the frame

Action: Monitor - No remedial work recommended

i 5 - Very Low Risk (Finding 7)

Item: Activity Equipment - Climbing Frame
Manufacturer: Wicksteed Playgrounds

Risk Level: V - Very Low Risk
Surface: Matta



Finding: There is/are finger entrapment/s in the frame and the item fails to meet the requirements of BS EN 1176 Part 1 4.2.7.6 Entrapment of fingers

Action: Monitor - No remedial work recommended

i 6 - Low Risk (Finding 8)

Item: Activity Equipment - Climbing Frame
Manufacturer: Wicksteed Playgrounds

Risk Level: L - Low Risk
Surface: Matta



Finding: The paintwork on this item has been damaged or worn exposing the metal underneath which is rusting

Action: Treat any rusting components and repaint

i 8 - Low Risk (Finding 9)

Item: Activity Equipment - Climbing Frame
Manufacturer: Wicksteed Playgrounds

Risk Level: L - Low Risk
Surface: Matta



Finding: The surface is lifting at the edges and creating trip points

Action: Repair perimeter of surfacing to remove trip points

i 5 - Very Low Risk (Finding 10)

Item: Activity Equipment - Climbing Frame
Manufacturer: Wicksteed Playgrounds

Risk Level: V - Very Low Risk
Surface: Matta



Finding: There is/are finger entrapment/s in the frame due to missing inserts and the item fails to meet the requirements of BS EN 1176 Part 1 4.2.7.6 Entrapment of fingers

Action: Replace the missing inserts to remove the entrapment

i 5 - Very Low Risk (Finding 1)

Item: Activity Equipment - Log Climber
Manufacturer: Wicksteed Playgrounds

Risk Level: V - Very Low Risk
Surface: Grass



Finding: The connecting links are in excess of 8.6mm and less than 12mm and fail the requirements of BS EN 1176 Part 1; clause 4.2.13, Chains

Action: Monitor - No remedial work recommended

i 6 - Low Risk (Finding 2)

Item: Activity Equipment - Log Climber
Manufacturer: Wicksteed Playgrounds

Risk Level: L - Low Risk
Surface: Grass



Finding: The timber has a number of splits/shakes or air cracks and this may affect the stability or allow water ingress which will accelerate the rotting process
Action: Monitor to ensure the splits do not cross through fixing points of the structure and/or cause any instability

i 10 - Low Risk (Finding 1)

Item: Rocking Equipment - Spring Donkey
Manufacturer: Wicksteed Playgrounds

Risk Level: L - Low Risk
Surface: Matta



Finding: The spring donkey has been removed but the steel base is still present
Action: Replace the spring donkey or remove the foundation plates

i 8 - Low Risk (Finding 1)

Item: Rocking Equipment - See Saw
Manufacturer: Wicksteed Playgrounds

Risk Level: L - Low Risk
Surface: Matta



Finding: There is moderate damage to the surface

Action: Repair the damaged areas of surfacing